



12 Overton Road

, London, E10 7NN

£2,800



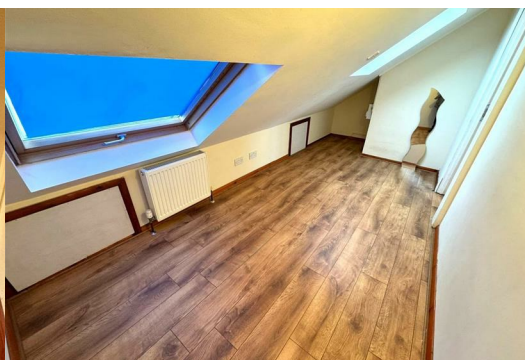
Zuplex is delighted to present this charming 4-bedroom property, offering spacious and comfortable living throughout.

Key features include four well-proportioned bedrooms, two bright and airy reception rooms, a fully fitted kitchen with a dining area, a family bathroom, and an additional separate toilet. The property also benefits from a private garden, perfect for outdoor relaxation, as well as gas central heating and double glazing throughout, ensuring warmth and energy efficiency.

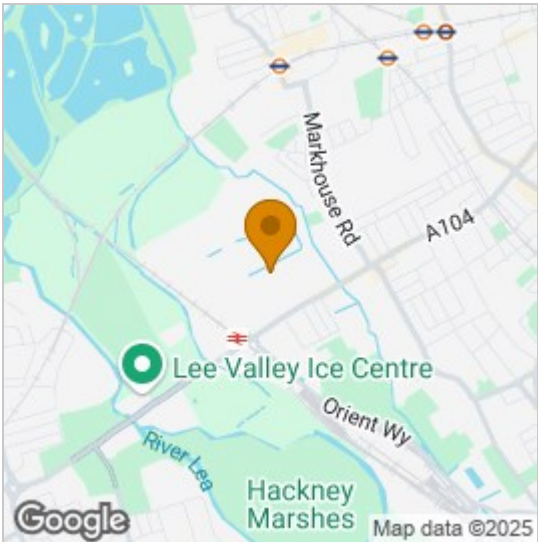
Conveniently located just a short walk from Lea Bridge Station, the property offers excellent transport links to central London and the surrounding areas. Additionally, it is close to a wide range of local shops, cafes, and essential amenities, making day-to-day living both convenient and enjoyable. Overton Road itself, with its proximity to local schools, shops, and cafes, offers a balanced lifestyle for those seeking both comfort and accessibility in London.

The property is offered unfurnished and is available for immediate occupancy.

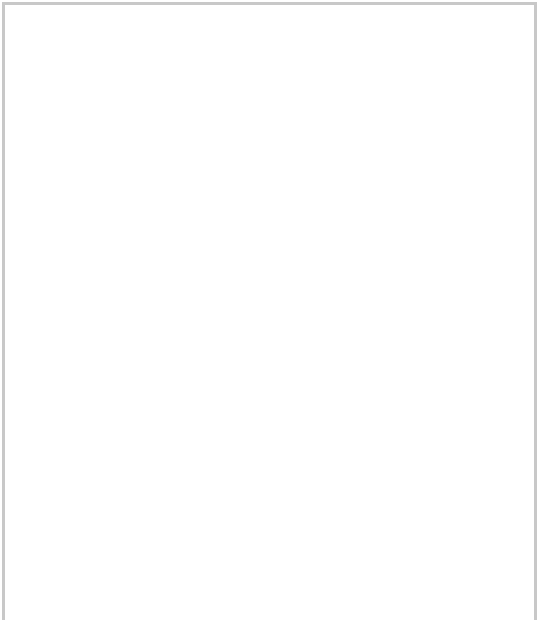
Available Now



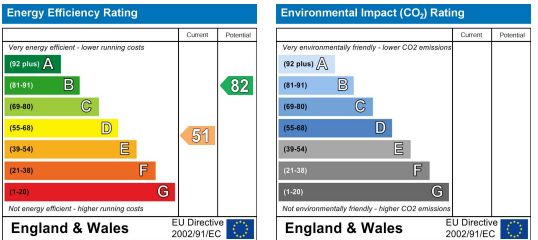
Area Map



Floor Plans



Energy Efficiency Graph



These particulars, whilst believed to be accurate are set out as a general outline only for guidance and do not constitute any part of an offer or contract. Intending purchasers should not rely on them as statements of representation of fact, but must satisfy themselves by inspection or otherwise as to their accuracy. No person in this firms employment has the authority to make or give any representation or warranty in respect of the property.